

2022 IMPACT REPORT



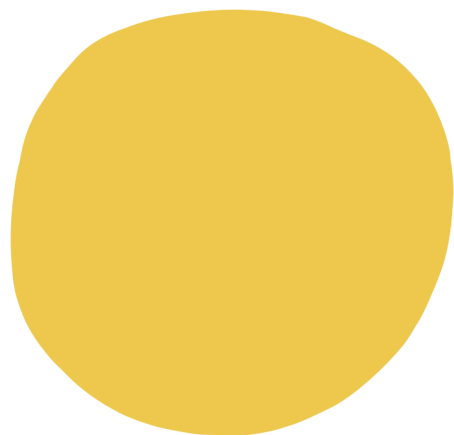
Student Volunteers from the Overland Project Group working on a bridge on the Nancy Lake State Recreation Area Trail System. This project was made possible by a grant from the Mat-Su Trails and Parks Foundation to Alaska State Parks.



Wild. Accessible. World-Class.

We acknowledge that we recreate outdoors on the ancestral territory of the Dena'ina and Ahtna peoples.

The Mission of the Mat-Su Trails and Parks Foundation is to be the trails and parks resource for a healthy community in the Mat-Su



Contents:

Page 2 - Letter from Board Chair

Page 3 - IMSHP Restoration Project

Pages 4 to 5 - 2022 Project Highlights

Pages 6 to 7 - 2022 Grants

Page 8 - Meet Our Team

Page 9 to 10 - Business Sponsors

PLANNING FOR THE FUTURE

It has been a year of evolution for the Mat-Su Trails and Parks Foundation - adapting to new board roles, expanding with new staff, and progressing with new investments in local trail and park projects. In my new role as board chair, it is now my privilege to present your 2022 impact report. It is *your* impact report because the work that we do is accomplished through community involvement. You are the people who have contributed to our mission of being the trails and parks resource for a healthy community. Moreover, the community impact is seen through the planning, design, building, and maintenance of infrastructure and programs we support. With your help we continue to strive for a world-class trail and park system in the Mat-Su!

The year was bracketed by significant weather events. The wind storm in January ripped through the Valley and put stress on residents and public services. Many park areas were affected by downed trees and wind drifts. The trail and park users in many communities stepped up to help clear the trails along with land managers and their organizational partners.

This winter we've already had heavy snow followed by strong winds, and it's awesome to see dedicated user groups showing up again to help maintain the trails and recreation areas that people treasure. Despite the challenges and uncertainties of the past year, Alaskans are resolute and people truly care about their local park areas. It is humbling to be a small part of such a motivated community.

I would like to extend my sincere gratitude to all of those who have contributed to our success, including our staff, board members, donors, and partners. Your impacts are appreciated! Your support has been instrumental in allowing us to continue making grants to promote, protect, and build trails and parks for all to enjoy here in the Mat-Su.

I am confident that, with your continued support, we will be able to continue growing and making an impact in the years to come.



George Hoden
MSTPF Board
Chair





INVESTING IN COMMUNITY

Independence Mine State Historical Park Restoration Project

Independence Mine State Historical Park will receive some much-needed historic restoration and preservation work over the next three years.

“Independence Mine State Historical Park is a real treasure. Unfortunately, limited funds make the extensive maintenance of the site a challenge. Not only are the historical structures exposed to the extreme weather conditions of Hatcher Pass, but multiple acts of vandalism have left broken doors and windows. Artifacts have been destroyed, lost, or exposed to the elements. As a result, we’ve had to close many of the buildings to the public.”

STUART LEIDNER
ALASKA STATE PARKS MAT-SU SUPERINTENDENT

Thanks to a generous 1.3 million dollar grant from The Leona M. and Harry B. Helmsley Charitable Trust, local partnerships, and community support from donors like YOU, four buildings at IMSHP are receiving much-needed repairs and improvements. The Mat-Su Trails and Parks Foundation, working with Alaska State Parks and the State Office of History and Archeology, will manage this multi-year rehabilitation project. **This project is only possible due to your continued investment because you care about creating more world-class outdoor opportunities to enjoy today, and investing in our community’s future needs!**

2022 in Review

This year, when I talk to people about the Alaska Long Trail, I liken it to sowing a Spruce seed. Like an iconic Alaskan tree, this project will need many years to mature. But it will be a world-class resource, inspiring residents and visitors alike to travel through a trail system spanning 500 miles or more. We are working alongside Alaska Trails and the rest of the coalition to see this through, and it's an exciting project to be a part of in 2023. This past year is also full of seeds that we will be watching grow over the years. The first phase of the Skeetawk summer trails are close to ready in 2023. Valley Mountain Bikers and Hikers continue to add to the spectacular

single-track system at GPRC with another downhill segment. We are pleased to continue partnering with Willow Area Community Organization which will be building a bike pump track at Newman Park. Finally, we will be stewarding the funds to rehabilitate four buildings at Independence Mine State Historical Park, and the work on the new Curry Ridge trail will continue this summer. Along with you and the rest of the community, I'm looking forward to seeing these seeds grow in 2023.

See you on the trails!

Wes Hoskins
Executive Director



Newman Park, Willow

Beginning in 2011, the Willow Area Community Organization has been building Newman Park, a recreational gem in the core of their community. Mat-Su Trails and Parks Foundation has been with them every step of the way, from helping to build a very popular dog-park to building multi-use trails, and now we are so excited to see the Shem Pete Interpretive Trail finished. This trail was a multi-year partnership which honors Shem Pete, a brilliant Dena'ina cultural ambassador, who trapped and hunted all over the Willow area. **This summer, the next project also funded by the MSTPF is a bike park that will include flow trails and a skill features area.** We look forward to watching Newman Park grow into the future!



There's fun for the whole family
(even our four-legged family) at
Newman Park!

Skeetawk Summer Trails

TRAIL CONSTRUCTION BEGAN ON TWO NEW SUMMER TRAILS AT SKEETAWK THIS PAST SUMMER THANKS TO GENEROUS GRANTS FROM THE MAT-SU TRAILS & PARKS FOUNDATION AND FROM THE STATE OF ALASKA RECREATIONAL TRAILS PROGRAM.

The first is a multi-use trail, beginning at the Skeetawk parking lot and climbing up just past the first chairlift. This trail is expected to be completed in June 2023, and will be part of a larger network of trails eventually connecting to the 16-mile trail system, and Government Peak Recreation Area.



Photo of the new Meadow Loop Trail at Skeetawk.

The second trail, the "Meadow Loop" is a beginner multi-use loop at the top of the chairlift that provides scenic accessible views. **The Meadow Loop trail is complete and Skeetawk looks forward to sharing this trail with everyone in the years to come!**



Interior Trails owners Gabe and Christine, and MSTPF ED Wes checking out a portion of the Curry Connector Trail in 2021.

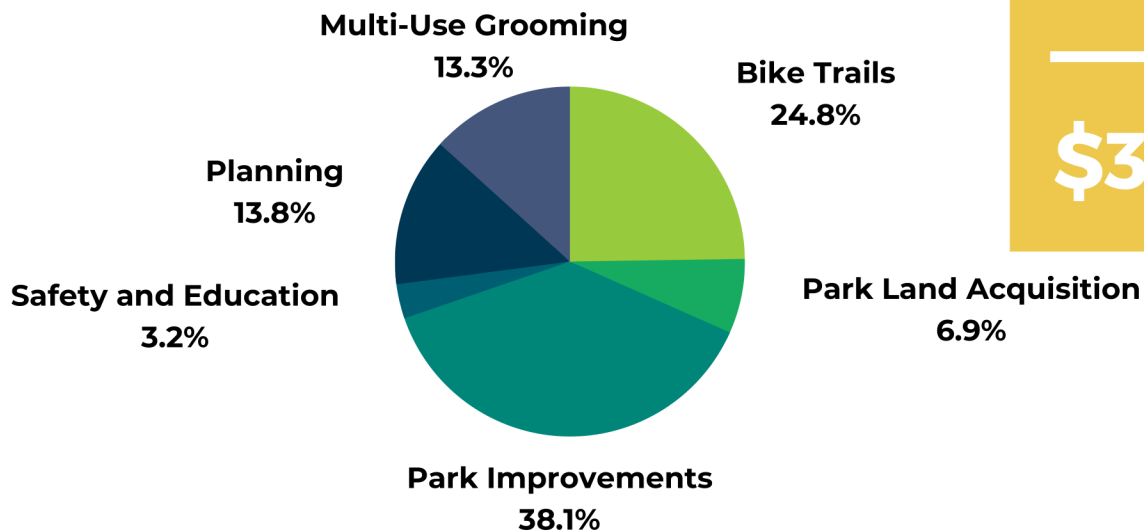
Photo of Skeetawk Summer Trail construction. Soil conditions and higher than average rain events during the short construction window were a common challenge for trail projects in 2022.

SCORP Update

The 2023-2027 Statewide Outdoor Comprehensive Plan (SCORP) is done and will be available to the public in early 2023. We are very proud to be the Mat-Su coordinator for this effort. The SCORP harnesses input from the public and land managers to organize better outdoor recreation planning for Alaskan communities. This plan will set priorities for \$37 million in federal funding in the next five years!

2022 GRANT PROGRAM

Grants by Project Category



2022 Total Grants

\$363,375

2022 Grantee Projects

- Q1**
 - Willow Area Community Organization** - Shem Pete Phase 3, [\\$13,400](#)
 - Valley Mountain Bikers and Hikers** - Field of Dreams Bike Trails Phase I, [\\$40,000](#)
 - City of Wasilla** - Iditapark Improvements, [\\$35,000](#)
- Q2**
 - Mat-Su Tennis Club** - Palmer Tennis Courts [\\$90,000](#)
 - Alaska Trails** - Pioneer Peak Trail Prescription, [\\$6,500](#)
 - Meadow Lakes Community Development** - 40-Acre Trails Plan, [\\$4,800](#)
- Q3**
 - Willow Area Community Organization** - Bike Park, [\\$50,000](#)
 - Great Land Trust** - Settlers Bay Coastal Park Expansion, [\\$25,000](#)
 - Lake Louise Snowmachine Club** - Project Wolf Tracks, [\\$25,000](#)
 - Alaska Trails** - Alaska Long Trail Mat-Su Coordinator, [\\$38,775](#)
- Q4**
 - Curry Ridge Riders** - Grooming Attachment, [\\$4,136](#)
 - Hatcher Pass Avalanche Center** - Snowmachine Outreach, [\\$11,564](#)
 - Mid-Valley Trail Club** - Grooming Machine, [\\$19,200](#)

SCAN TO LEARN MORE ABOUT OUR 2022 GRANTEES!



SOME OF THE USER GROUPS WHO BENEFITED FROM 2022 GRANTEE PROJECTS



WHAT MSB AREAS DID OUR GRANT FUNDING GO TO IN 2022?

**Areas refer to the location of project within a defined MSB City or Community Council (CC).*

City of Palmer - \$90,000

Willow & Susitna CCs - \$82,600

Fishhook CC - \$51,564

Borough-Wide - \$38,775

City of Wasilla - \$35,000

Louise, Susitna, & Tyone Lakes CC - \$25,000

Knik-Fairview CC - \$25,000

South Knik River CC - \$6,500

Meadow Lakes CC - \$4,800

Trapper Creek CC - \$4,136

2022 Mat-Su Pathfinder Award

MSTPF's annual Pathfinder award is meant to honor and recognize those dedicated community members who go above and beyond to provide outdoor opportunities in our community! **For 2022, we are thrilled to announce Ed Strabel is the recipient of the Mat-Su Pathfinder Award.**

Ed Strabel has been a tireless advocate for trail improvements to expand year-round outdoor recreation in the Mat-Su for decades. He was instrumental in the development of trail systems at Crevasse-Moraine, Colony High School and most recently, at Government Peak Recreation Area. Along with trail advocacy, as a nordic ski coach he has brought the knowledge and love of the sport to multiple generations of Mat-Su youth.



Meet Our Team

Staff



EXECUTIVE DIRECTOR

Wes Hoskins

whoskins@matsutrails.org



DONOR RELATIONS OFFICER

Taylor Raftery

traftery@matsutrails.org



OPERATIONS OFFICER

Katherine Cooper

kcooper@matsutrails.org

Board of Directors



BOARD CHAIR

George Hoden



VICE CHAIR

Kathy Swartz



TREASURER

Lorraine Cordova



SECRETARY

Cara Durr



Paul Clark



Brian Winnestaffer



Sam Adams



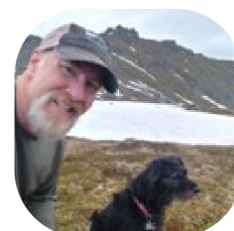
Bob Charles



Randall Kowalke



Susie Lemons



Ryan Mollnow

THANK YOU TO OUR BUSINESS SPONSORS WHO KNOW TRAILS AND PARKS ARE AT THE HEART OF A HEALTHY COMMUNITY!



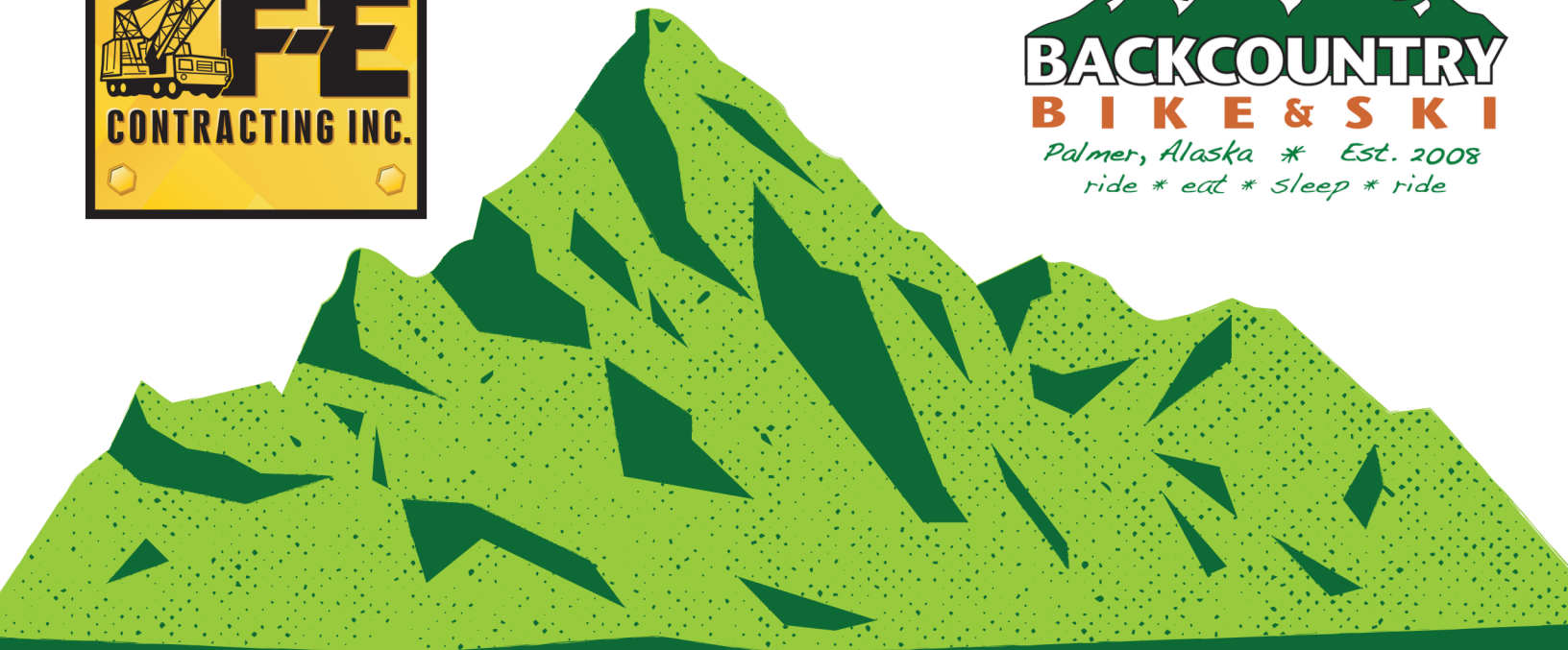
LUPINE DENTAL



VALLEY Imaging Center



DuClos orthodontics



For more information about how you or your business can support your favorite Mat-Su Trails and Park please visit www.matsutrails.org or email us at info@matsutrails.org



" MSTPF is a critical partner in helping to provide avalanche safety information for recreationalists at Hatcher Pass. MSTPF funding has allowed HPAC to post informational signage, install trailhead beacon checkers, and grow our snowmachine outreach."

MARISSA BIEGER, EXECUTIVE DIRECTOR, HATCHER PASS AVALANCHE CENTER



We are grateful for the support of our local partners who



MAT-SU HEALTH FOUNDATION

invest in our trails, parks, and community!

Thanks Mat-Su Regional Medical Center for Supporting Wild, Accessible, and World-Class Outdoor Recreation Opportunities in the Mat-Su!

MAT-SU REGIONAL



MEDICAL CENTER



THE MAT-SU TRAILS AND PARKS FOUNDATION

EIN #: 90-0699180

PO Box 652, Palmer, AK 99645

907-746-8757

info@matsutrails.org

SUPPORT TRAILS AND PARKS IN THE MAT-SU!

Visit www.matsutrails.org to find out
how you can support trails, parks, and
recreation opportunities in the Mat-Su!